

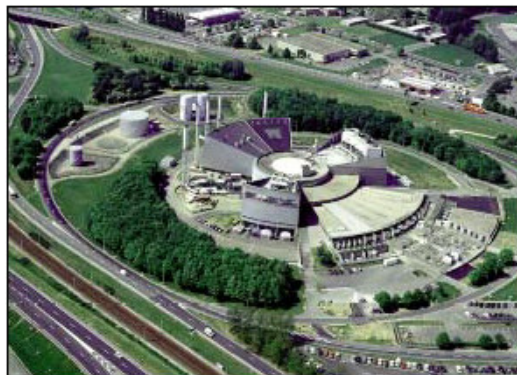
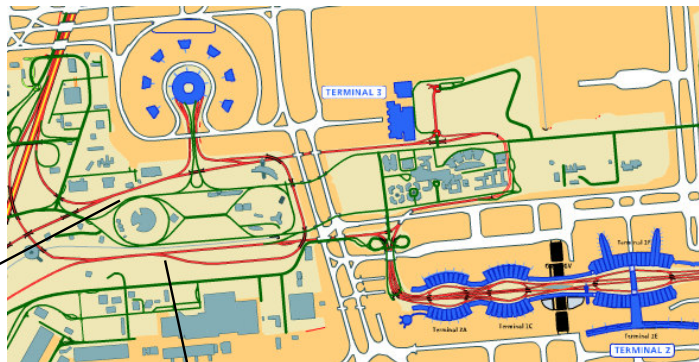


EFACEC wins ADP – Aéroports de Paris contract

EFACEC AMT and **DT** win a **1,18 million euros** contract for the Airport Roissy - Charles de Gaulle in Paris.

In the renewing process of the Centrale ANA (Aide à la Navigation Aérienne) emergency system, it will be supplied forty-eight Normacel 24 cubicles, twelve Normafix 24 cubicles, three 8.5 MVA transformers and two 400 kVA Powercast transformers.

The equipment will be installed in the Co-generation Central CTFE (Thermo-Electrical Central)



This will be the first achievement in France, in partnership with Clemessy (engineering solutions integrator, production management and maintenance).